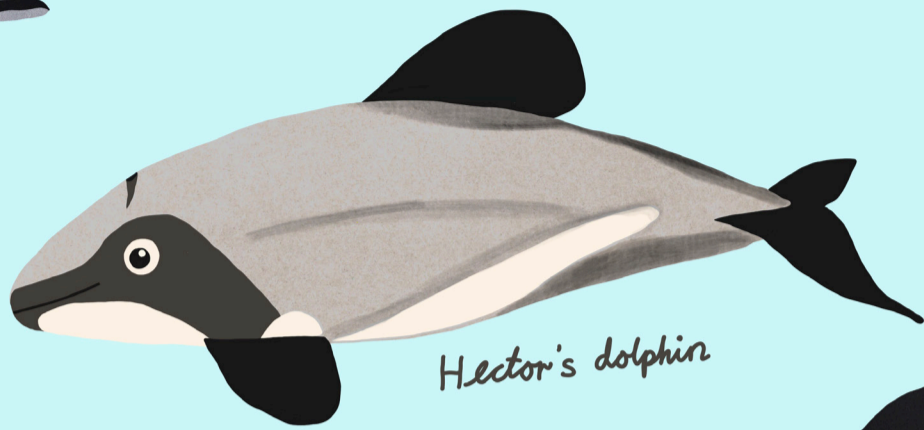


WILDLIFE *found in and around* AKAROA HARBOUR



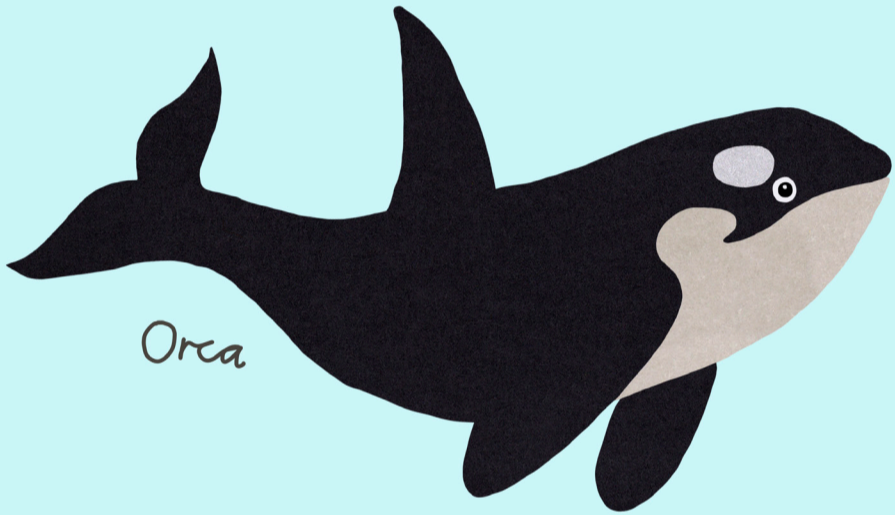
White-flippered penguin



Hector's dolphin



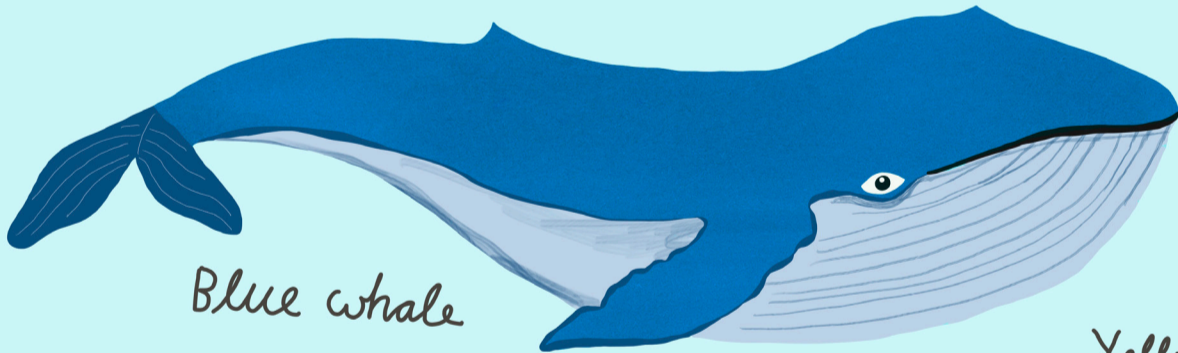
NZ fur seal



Orca



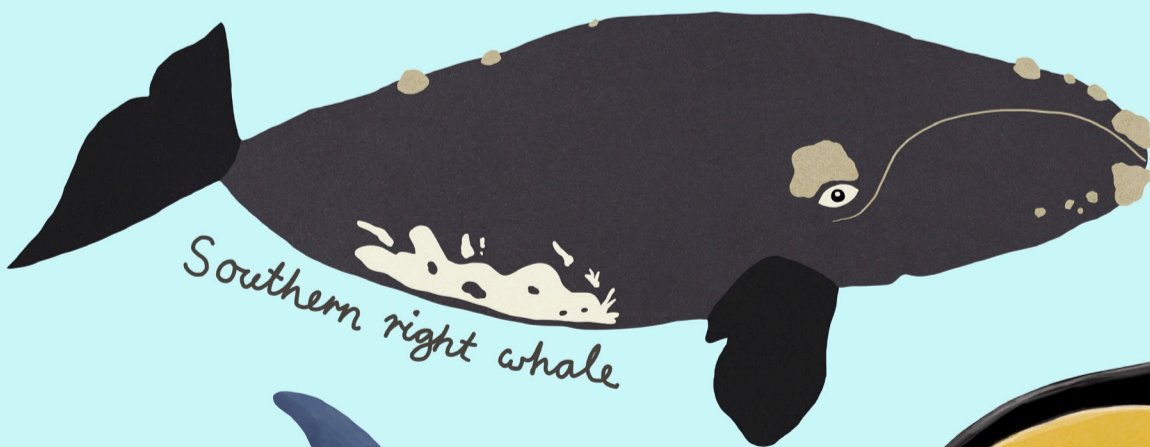
Humpback whale



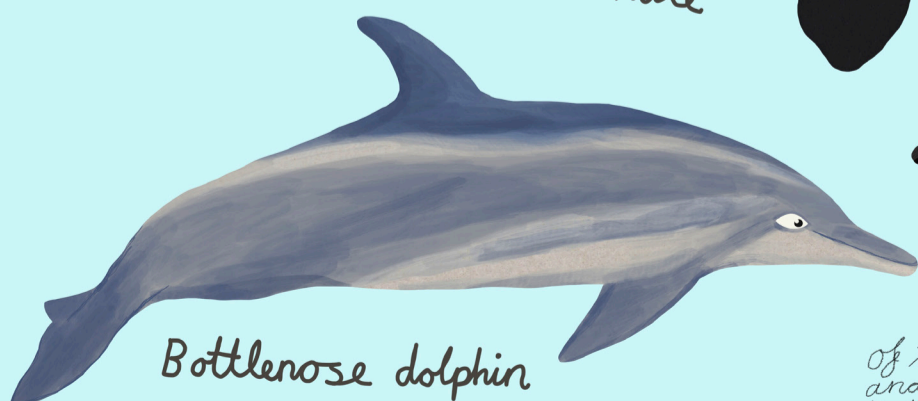
Blue whale



Yellow-eyed penguin



Southern right whale



Bottlenose dolphin



Common dolphin

Of these animals the Hector's dolphins, NZ fur seals and White-flippered penguins are the most common to see around the Akaroa harbour. The rest are only seen on rare occasions.